

# Kako u ESET File Security for Linux (4.5) postojeću licencu zamijeniti novom?

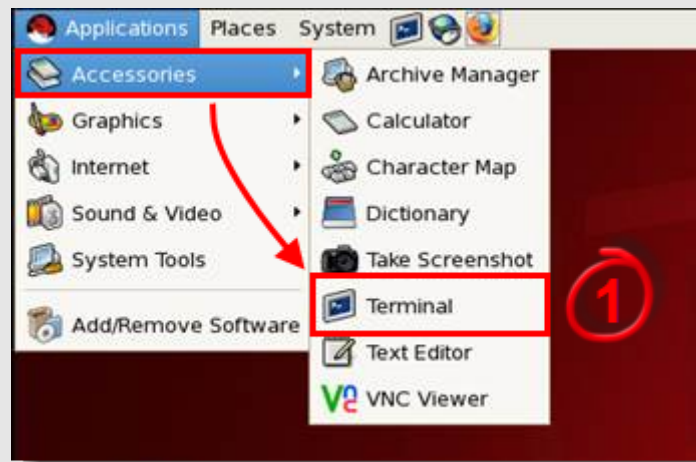
Kako u ESET File Security for Linux zamijeniti postojeću licencu novom?

## Pitanje

- Kako u ESET File Security for Linux postojeću licencu zamijeniti novom?

## Odgovor

1. Otvorite novi Terminal prozor tako da kliknete na Applications → Accessories → Terminal.



Slika 1-1

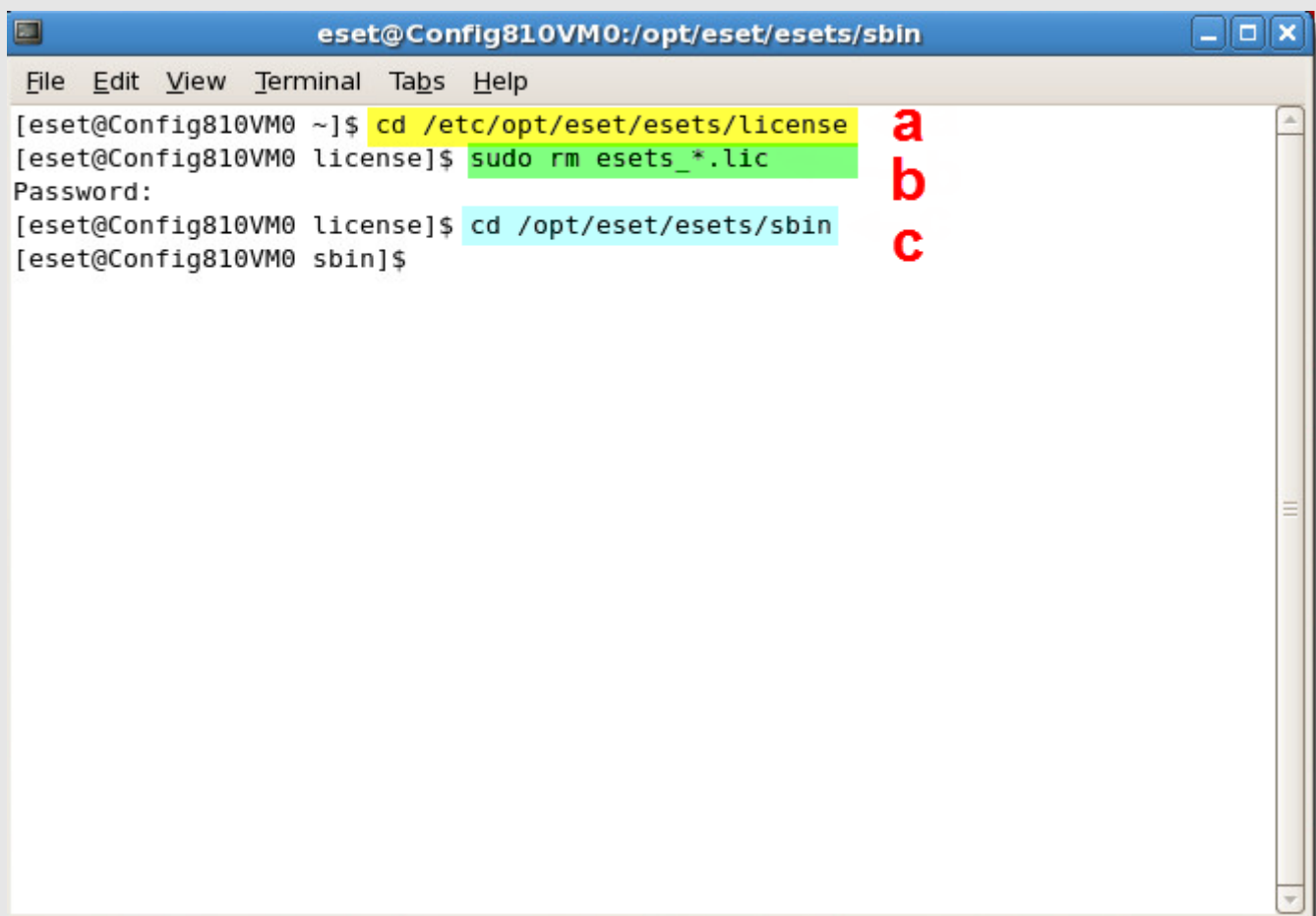
2. Upišite niže navedene naredbe točno u ovdje navedenom redosljedu i pritisnite Enter nakon svake od tih naredbi.

Upišite vašu lozinku kada od vas to bude zatraženo (kursor se neće micati dok upisujete lozinku).

```
cd /etc/opt/eset/esets/license
```

```
sudo rm esets_*.lic
```

```
cd /opt/eset/esets/sbin
```

A terminal window titled "eset@Config810VM0:/opt/eset/esets/sbin" with a menu bar (File, Edit, View, Terminal, Tabs, Help). The terminal shows the following sequence of commands and outputs:

```
[eset@Config810VM0 ~]$ cd /etc/opt/eset/esets/license  
[eset@Config810VM0 license]$ sudo rm esets_*.lic  
Password:  
[eset@Config810VM0 license]$ cd /opt/eset/esets/sbin  
[eset@Config810VM0 sbin]$
```

Red letters 'a', 'b', and 'c' are positioned to the right of the terminal output, corresponding to the three highlighted lines of code.

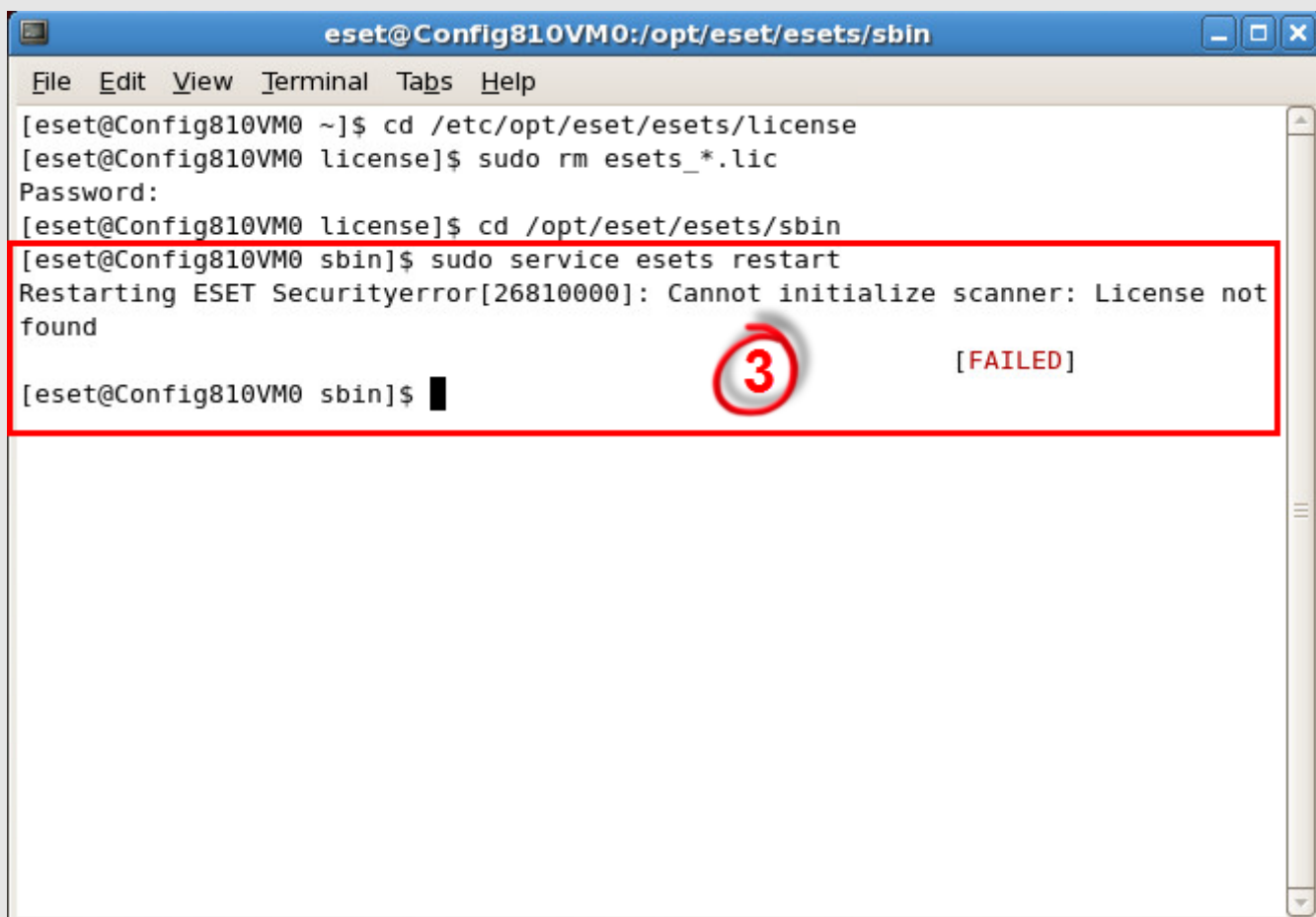
Slika 1-2

3. Kako biste potvrdili da ste supješno uklonili vašu staru isteklu licencu, upišite niže navedenu naredbu kako biste restartali ESET servis.

Dobiti ćete poruku pogreške "Cannot initialize scanner: License not found".

Ponovite postupak opisan u koraku 2 ako ne dobijete ovu poruku pogreške.

```
sudo service esets restart
```

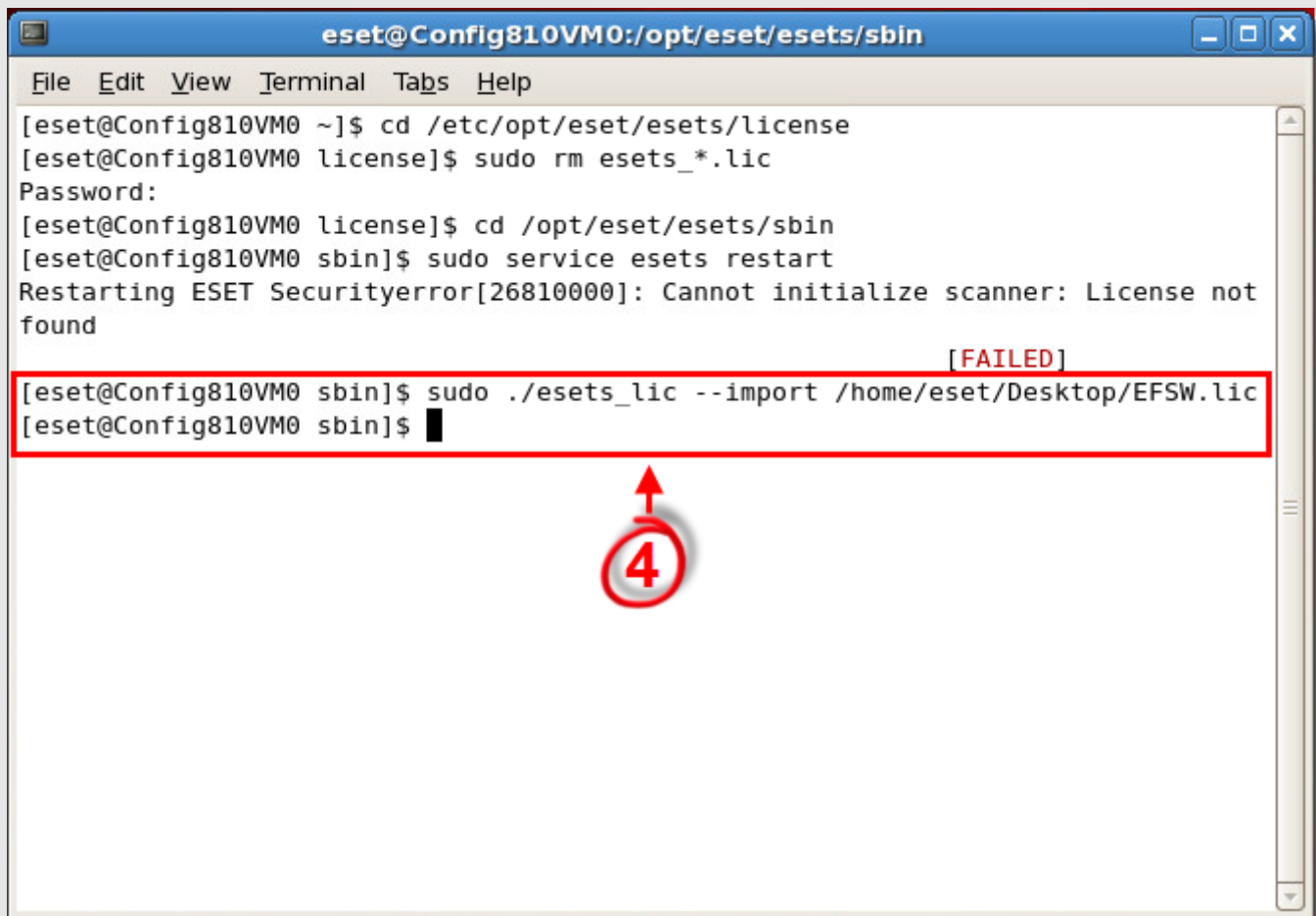
A terminal window titled 'eset@Config810VM0:/opt/eset/esets/sbin'. The terminal shows the following sequence of commands and output:  
[eset@Config810VM0 ~]\$ cd /etc/opt/eset/esets/license  
[eset@Config810VM0 license]\$ sudo rm esets\_\*.lic  
Password:  
[eset@Config810VM0 license]\$ cd /opt/eset/esets/sbin  
[eset@Config810VM0 sbin]\$ sudo service esets restart  
Restarting ESET Securityerror[26810000]: Cannot initialize scanner: License not found  
[eset@Config810VM0 sbin]\$  
A red box highlights the last two lines of output. A red circle with the number '3' is drawn around the word 'FAILED' in the output line. The output line is: [FAILED]

Slika 1-3

4. Upišite niže navedenu naredbu kako bi izvršili import nove datoteke licence.

Ako ste vašu novu licencu spremili na Desktop (Radnu površinu), lokacija nove datoteke licence izgledati će slično ovome: /home/eset/Desktop/EFSW.lic (pogledajte Sliku 1-4).

```
sudo./esets_lic--import location of new license file (for example  
/home/eset/Desktop/EFSW.lic)
```



The image shows a terminal window titled "eset@Config810VM0:/opt/eset/esets/sbin". The terminal output is as follows:


```
File Edit View Terminal Tabs Help
[eset@Config810VM0 ~]$ cd /etc/opt/eset/esets/license
[eset@Config810VM0 license]$ sudo rm esets*.lic
Password:
[eset@Config810VM0 license]$ cd /opt/eset/esets/sbin
[eset@Config810VM0 sbin]$ sudo service esets restart
Restarting ESET Securityerror[26810000]: Cannot initialize scanner: License not
found
[FAILED]
[eset@Config810VM0 sbin]$ sudo ./esets_lic --import /home/eset/Desktop/EFSW.lic
[eset@Config810VM0 sbin]$
```

A red box highlights the last two lines of the terminal output. A red circle with the number "4" and an upward-pointing arrow is positioned below the box, pointing to the highlighted command.

Slika 1-4

5. Upišite niže navedenu naredbu kako bi ponovo restartali ESET servis.  
Kada dobijete poruku "OK", vaša nova licenca uredno je uvezena u proizvod.  
`sudo service esets restart`

```
eset@Config810VM0:/opt/eset/esets/sbin
File Edit View Terminal Tabs Help
[eset@Config810VM0 ~]$ cd /etc/opt/eset/esets/license
[eset@Config810VM0 license]$ sudo rm esets_*.lic
Password:
[eset@Config810VM0 license]$ cd /opt/eset/esets/sbin
[eset@Config810VM0 sbin]$ sudo service esets restart
Restarting ESET Securityerror[26810000]: Cannot initialize scanner: License not
found
[FAILED]
[eset@Config810VM0 sbin]$ sudo ./esets_lic --import /home/eset/Desktop/EFSW.lic
[eset@Config810VM0 sbin]$ sudo service esets restart
Restarting ESET Security [ OK ]
[eset@Config810VM0 sbin]$
```



Slika 1-5

## Dodatne informacije i linkovi na povezane članke baze znanja

- [Kako preuzeti i instalirati ESET Serverska rješenja za Linux/FreeBSD?](#)
- [Kako aktivirati web sučelje u ESET Security for Linux/FreeBSD?](#)

---

SOLN3431

---